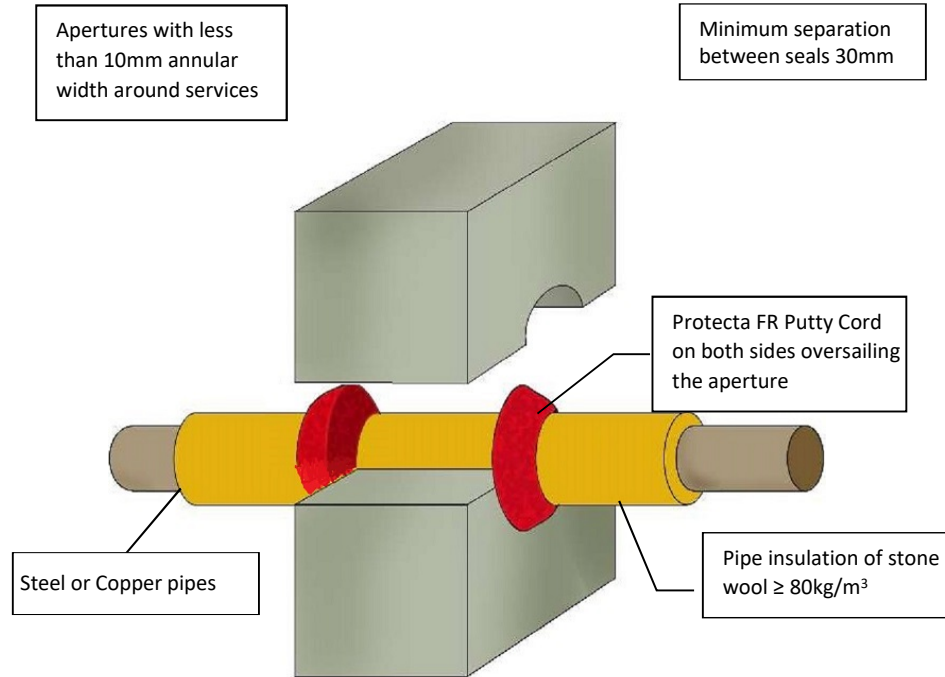


Protecta FR Putty Cord - Concrete Wall - Pipe Continuous Insulation

Installation Instructions

1. Before installing Protecta® FR Putty Cord ensure that the surface of all service penetrations and surrounding construction is wiped clean, dry, free from all loose contaminants, dust, oils and grease.
2. Place the Putty Cord around the services so that it seals the services to the wall all the way round.
3. Press the Putty Cord into the wall and services with your thumbs to form a fillet or V shape joint, ensuring good contact is made all the way round the services and the wall.
4. Pipes may be Steel or Copper. Note that copper systems are AS1530 compliant only for closed systems.
5. The putty cord is designed to be easily fitted around service penetrations where the gap around the services is very small, or there is no gap at all so a conventional fire rated sealant is impossible or difficult to fit due to the required depth and backing material. The putty cords are fitted covering the gap around the services and do not need to fill the gap to any required depth.



System/FPA Register ID# FC406

Products	Protecta FR Putty Cord
Application	Fire stopping of pipes with continuous insulation in rigid walls
Construction	Minimum wall thickness of 100mm and comprise concrete, aerated concrete or masonry, with a density of $\geq 650 \text{ kg/m}^3$

Fire & Sound Classification

<u>Steel</u> up to 40mm with 20mm thick insulation	FRR -/120/120
<u>Steel</u> up to 324mm with 30-80mm thick insulation	FRR -/90/60
<u>Copper</u> up to 12mm, 0.7-6.0mm wall, with 20mm thick insulation	FRR -/90/60*
<u>Copper</u> up to 54mm, 1.2-14.2 wall, with 30-80mm thick insulation	FRR -/90/60*

*Closed systems only

As a part of our policy of on-going product development and testing, we reserve the right to modify, alter or change product specifications without giving notice. All information contained in this document is given in good faith and is provided for guidance only. Any drawings provided are for illustrative purposes only. As Polyseam has no control over the methods or competence of installation and of prevailing site conditions, no warranties, expressed or implied, is intended to be given as to the actual performance of the product mentioned or referred to herein and no liability whatsoever will be accepted for any loss, damage or injury arising from the use of the information given.

For all technical details on the products specified please refer to the technical data sheets that can be found on www.firestopcentre.co.nz

Signed and approved:

Sheet size:	Drawn date & no:
A4	29/5/18
Scale:	Drawn by:
NTS	K.B